



# RETURN 2 SCHOOL FALL REOPENING PLAN

School Year 2021-2022

[WWW.WCCUSD.NET/RETURN2SCHOOL](http://WWW.WCCUSD.NET/RETURN2SCHOOL)



FALL REOPENING PLAN



# WELCOME BACK!

We're excited to have you back for the 2021-22 school year. The safety of WCCUSD students and staff is our top priority for the 100% return to in-person learning. To help keep everyone safe:

- Masks will be required indoors.
- If you are sick, stay home.
- Practice safe health hygiene.
- Socially distance where possible.
- Schedule a Covid-19 appointment.

*\*Protocols and procedures may be subject to change based on CDPH guidelines.*



At the **May 5** meeting the West Contra Costa Unified School District Board of Education approved the following statement:

*“The District **will reopen** for 100% in-person learning this Fall pursuant to local, state, and federal guidelines and with additional resources provided by WCCUSD to schools in need of them. These resources may include but are not limited to additional counselors, mental health services, custodians, CSO’s, etc., and the district will make these recommendations to the board this summer.”*





# TABLE OF CONTENTS



## INSTRUCTIONAL CORE/SOCIAL EMOTIONAL/ TECHNOLOGY

PAGES 5-20: Restorative Start p. 7-9 | Social Emotional p. 10 | Learning Acceleration p. 11 | Family & Community Engagement p. 12 | Learning Support p. 13 | Technology p. 14 | Learning Options p. 15-19



## OPERATIONS

PAGES 20-35: Masking p. 22 | Physical Distancing p. 23 | Health Screening p. 24 | Hand Hygiene p. 25 | Cleaning & Disinfecting p. 26 Meals p. 27 | Transportation p. 28 | Entry into Campus p. 29-31 | Visitor & Volunteers p. 32 | Possible Covid Exposure p. 33



## STAKEHOLDER ENGAGEMENT/COMMUNICATIONS

PAGES 34-47: Thought Exchange p. 34-42 | District Resources p. 43 | School Resources p. 45 | Communication Plan p. 46 Feedback p. 47





# SCHOOL AND CLASSROOM EXPERIENCE

INSTRUCTIONAL CORE/SOCIAL  
EMOTIONAL LEARNING/ TECHNOLOGY



# INSTRUCTIONAL CORE/SOCIAL EMOTIONAL LEARNING/TECHNOLOGY

## AT-A-GLANCE

### SOCIAL EMOTIONAL

A focus on Restorative Start centered on relationships, whole child needs, strengthening staffing & partnerships, relevant & rigorous teaching, and rebuilding systems.

### LEARNING ACCELERATION

Acceleration and intervention opportunities for students struggling in math and reading. One-on-one or group tutoring support will be available. Staff will develop earning plans to assess and address student learning levels affected during school closures.

### LEARNING SUPPORT

Universal Design for Learning, and Reader's and Writer's Workshop

### STUDY OPTIONS

Families who wish to choose Independent Study for personal or medical reasons can enroll in Vista Independent study for the 2021-22 school year.

### FAMILY AND COMMUNITY ENGAGEMENT

Build and nurture healthy relationships with family and community through multiple communication methods.

### TECHNOLOGY

Students will continue to use digital platforms and applications to support student learning outcomes. Zoom will only be used in the event of emergency school closures.



# A RESTORATIVE RESTART

Our instructional plan during our Restorative Restart, emphasizing the first six weeks of school, builds on the work we have done as a district; it acknowledges the hard work of our teachers, leaders, and staff and it emphasizes effective teaching practices and supports for social emotional wellness.

## 1 CENTER RELATIONSHIPS

Prioritize building and nurturing relationships of mutual support and high expectations among students, families, and educators.

- Create dedicated time and space during the day for relationship building for students and staff
- Implement positive and restorative discipline practices

## 2 ADDRESS WHOLE CHILD NEEDS

Identify the unique social, emotional, mental health, language, and academic needs of every student; develop plans to address those needs.

- Diagnostic assessments that offer teachers and school leaders sufficient information to guide instructional planning
- Creating action plans that meet the individual (whole child) needs of every student



# A RESTORATIVE RESTART

Our instructional plan during our Restorative Restart, emphasizing the first six weeks of school, builds on the work we have done as a district; it acknowledges the hard work of our teachers, leaders, and staff and it emphasizes effective teaching practices and supports for social emotional wellness.

3

## STRENGTHEN STAFFING & PARTNERSHIPS

Invest in staff and deepen community-based partnerships— including during summer and out-of-school time—to address students' individualized learning and mental health needs.

- Pair students with high dosage tutoring and mentoring
- Provide mental health supports
- Expand learning opportunities

4

## RELEVANT & RIGOROUS TEACHING

Support educators to prioritize equity; racial, cultural, and linguistic relevance; rigor; and the highest priority standards in curriculum and instruction.

- Use high-quality and culturally relevant curriculum
- Strategies and tools for addressing racism, privilege and bias in the classrooms
- Offer students choice and voice in their learning
- Reduced Class Sizes
- Increased Counselors





# A RESTORATIVE RESTART

Our instructional plan during our Restorative Restart, emphasizing the first six weeks of school, builds on the work we have done as a district; it acknowledges the hard work of our teachers, leaders, and staff and it emphasizes effective teaching practices and supports for social emotional wellness.

5

## REIMAGINE & REBUILD SYSTEMS

Lay the groundwork for long-term systemic transformation via collaboration and co-creation among racially, linguistically, and culturally diverse students and families, educators, and community partners.

- 6 Week focus on Culture and Climate



# SOCIAL EMOTIONAL LEARNING

In order to address the social emotional impacts of the global pandemic including depression, social isolation, grief, anxiety, anger, hopelessness, apathy, and despair we will implement the following at all schools:

- **6 Week Culture and Climate Plan:** Introductions, build classroom community, establish expectations and routines for academics and behavior.
- **SEL/Daily Classroom Circles:** To reestablish connections and (re)build relationships
- **Positive Behavior Intervention Systems/Multi-Tiered Interventions:** Tiered support services to students that support in creating a positive school climate and increase academic performance.
- **Restorative Justice Practices:** To increase the experience of safety and of relational support of students and staff at each school site, funds will be utilized for the following



# LEARNING ACCELERATION

- **Acceleration and Intervention:** Opportunities for students struggling in math and reading, one-on-one, or group high-dosage tutoring.
- **Individualized Learning Plans:** To assess and address different learning levels caused by COVID-19 school closures.
  - Universal Screeners and Assessments to diagnose learning loss needs
- **Expanded Learning:** Alignment of after-school programs to more effectively integrate instruction from the regular school-day into after-school learning plans.
- **Partnerships:** Increase partnerships with community-based organizations (CBOs), to provide students with unique out-of-school learning opportunities.
- **Counselors:** Increase of 20 counselors for academic and social-emotional support.
- **Reduced Class Size:** Class size reductions to offer more personalized support.
- **Start Time:** Increased opportunity for positive student attendance with later start time for schools:

SB 328



# Family and Community Engagement

WCCUSD is committed to building and nurturing relationships of mutual support and high expectations among students, families, and educators.

- **Home Visits:** Bridge the gap between home and school. Deepen the partnership between teacher and parent. Discuss and establish student academic and behavior goals.
- **Phone Calls/Texts:** Increase the opportunity to actively connect with families and increase communication.
- **Family Nights:** Convey and nurture trust with families and to build respectful and effective relationships to increase student academic success.



# LEARNING SUPPORT

## SUPPORT FOR STUDENTS:

- The WCCUSD school board adopted TK-6 Literacy Curriculum, Reading Writing and Phonics Units of Study from Columbia University to support students learning to read utilizing the Balanced Literacy Approach. This framework supports teachers to differentiate instruction to meet the needs of all learners. Our TK-6 teachers are attending a 4 day Reading Institute this summer specifically designed to support them in this endeavour post Covid 19.

## SUPPORT FOR TEACHERS:

- Teachers will receive ongoing training in UDL (Universal Design for Learning) on how to effectively support WCCUSD students. We plan to have a balance of whole group/small group instruction and assessment.

(link to resources- [The Universal Design for Learning Guidelines Graphic Organizer \(with numbers\)](#))





# TECHNOLOGY

Because all students are returning to in-person learning in August, Zoom will only be used in the event of emergency school closures, such as “smoke days”.

Technology remains an important tool in supporting students’ individual learning needs, promoting and supporting excellence through communication, collaboration, and creativity for all students, and preparing all students to become effective, responsible citizens. Therefore, school sites will continue to use digital platforms and applications in support of these student outcomes.

WCCUSD is investing in the following instructional technology platforms district-wide:

- Google Workspace
- Classroom for Education
- STAR ELA and Math
- Seesaw
- Newsela



# LEARNING OPTIONS

## INDEPENDENT STUDY

**Families may not “hold” a space at their current in-person school while participating in the Virtual School.**

In alignment with our internal enrollment policies and state regulations, students can only be enrolled in one school at a time. Students who are in our Virtual School/Independent Study program will be enrolled at Vista Virtual School, **and not enrolled** in any other school in the district at the same time.



# LEARNING OPTIONS

## INDEPENDENT STUDY

Recently, the state issued guidance to schools and districts about expectations for the coming school year. The expectation for all schools and districts is that we offer full-time, in-person instruction to all of our students for the coming school year, and that is what we as a district are prepared to offer our families. We are looking forward to seeing our students and staff back on our school campuses this fall beginning on Monday, August 16, as we focus on relationships and rigor.

### Independent Study Option

For families who wish to choose Independent Study for personal or medical reasons, here is information about what you can expect:

- There are two Independent Study options:
  - Short term - maximum 15 days, stay enrolled at your school
  - Long term - unenroll at your school and enroll in Vista's virtual academy
- Families will enroll in Vista Independent Study to participate for the 2021-22 school year.
- Independent Study will involve both synchronous and asynchronous portions of the school day.
- Dual language programming will not be available in our independent study.
- An individual with **exceptional needs shall not participate** in independent study, unless the pupil's individualized education plan specifically provides for that participation.



# LEARNING OPTIONS

## INDEPENDENT STUDY

- A statement in the written agreement detailing the academic and other supports that will be provided to address the needs of pupils who are not performing at grade level, or need support in other areas, such as, **English learners, individuals with exceptional needs** in order to be consistent with the pupil's individualized education program or plan, pupils in **foster care** or experiencing **homelessness**, and pupils requiring mental health supports.
- Students can switch back into In-Person Learning - *where space is available at a school at their grade level* - at any point during the semester. Requests need to be submitted to the Transfer Department.
- For high school students, we will pause on transfers during the last 3 weeks of the semester to ensure that credit acquisition is not interrupted.



# LEARNING OPTIONS

## INDEPENDENT STUDY

The Independent Study program occupies three classrooms located at the old Portola campus. Students who participate in independent study will experience daily interaction and synchronous learning.

### GRADES TK-3:

Daily synchronous instruction for all students

### GRADES 4-8:

Both daily live interaction & weekly synchronous instruction

### GRADES 9-12:

Weekly synchronous instruction

### SYNCHRONOUS INSTRUCTION:

- Classroom-style instruction or designated small group or one-on-one instruction
- Delivered in person, or in the form of internet or telephonic communications, and involving live two-way communication between the **teacher and pupil**
- Provided by the **teacher of record**

### LIVE INTERACTION:

- Interaction between the pupil and **classified or certificated staff** and may include peers
- Provided for the purpose of maintaining school connectedness, including, but not limited to, wellness checks, progress monitoring, provision of services, and instruction.
- This interaction may take place in person, or in the form of internet or telephonic communication





# LEARNING OPTIONS

## INDEPENDENT STUDY

**ENROLLMENT:** Families who are interested in enrolling in Vista Virtual Independent Academy, email Principal Jordan-McCormick at [edith.jordan-mccormick@wccusd.net](mailto:edith.jordan-mccormick@wccusd.net) to set up an appointment.

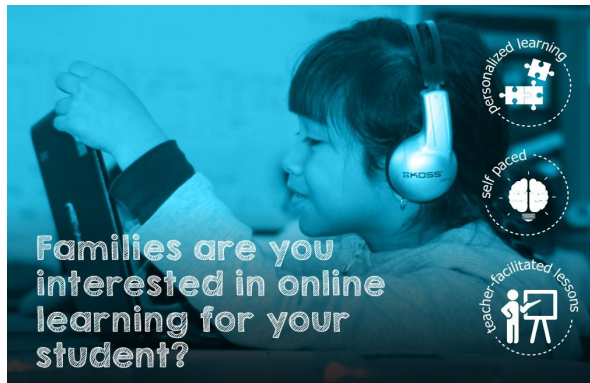
### INFORMATION SESSION:

Join us from 6:30 p.m.-7:30 p.m. on Thursday, July 22, via Zoom as Principal Edith Jordan-McCormick answers your questions about WCCUSD's newest learning option.

Zoom info:


<https://wccusd.zoom.us/j/99635240278>

Or phone: 1-669-900-6833, ID 99635240278#



**Families are you interested in online learning for your student?**

personalized learning  
self-paced  
teacher-facilitated lessons



**Familias: ¿Están interesadas en el aprendizaje en línea para sus estudiantes?**

aprendizaje personalizado  
trabajo realizado a su propio ritmo  
lecciones facilitadas por los maestros



**WCCUSD  
VIRTUAL  
SCHOOL**

Intra District Transfer applications are available at [www.wccusd.net/transfers](http://www.wccusd.net/transfers). If you have questions please send an email to [virtualschoolquestions@wccusd.net](mailto:virtualschoolquestions@wccusd.net).

A Virtual School family informational session is 6:30 p.m. on Thursday, July 22 via Zoom: [bit.ly/wccusdvirtual](https://bit.ly/wccusdvirtual)



**ESCUELA  
VIRTUAL  
DEL DISTRITO  
(WCCUSD)**

Las solicitudes de transferencia dentro del distrito están disponibles en [www.wccusd.net/transfers](http://www.wccusd.net/transfers). Si tiene preguntas, envíe un correo electrónico a [virtualschoolquestions@wccusd.net](mailto:virtualschoolquestions@wccusd.net).

Se llevará a cabo una sesión informativa sobre la Escuela Virtual para las familias el jueves 22 de febrero a las 6:30 p.m. a través de Zoom: [bit.ly/wccusdvirtual](https://bit.ly/wccusdvirtual)



INSTRUCTIONAL CORE





# CREATING SAFE SPACES

OPERATIONS: SAFETY & LOGISTICS





# OPERATIONS & LOGISTICS

## AT-A-GLANCE

### Vaccines

The COVID-19 vaccine is one of the most effective ways to decrease the COVID-19 rates throughout the community. Currently, those individuals 12 years old and up are eligible.

### Social Distancing

The District will follow the current CDC and CDPH guidance that recommends 3 feet social distance wherever possible.

### Meals

All students will receive free pre-packaged breakfast and lunch daily. Students may not sit across from each other indoors.

### Transportation

AC Transit and WestCAT will have full seating capacity on its bus lines. Students and passengers will be required to wear masks.

### Masks

Students are required to wear masks indoors, with exemptions per CDPH face mask guidance. Masks are optional outdoors.

### Entry & Exit

There will be one entry point of access in schools where possible. School gates will be marked with appropriate signage.



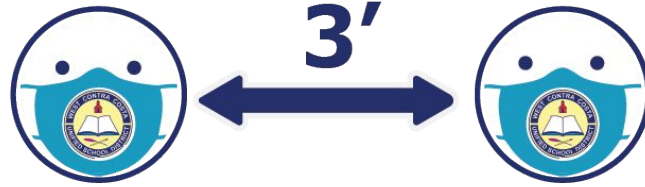


# MASKING

Masks are one of the most effective and simplest safety mitigation layers to prevent in-school transmission of COVID-19 infections and to support full time in-person instruction in K-12 schools.

- K-12 students are required to mask indoors, with exemptions per CDPH face mask guidance
- Masks are optional outdoors for all in K-12 school settings
- Adults in K-12 school settings are required to mask when sharing indoor spaces with students
- Persons exempted from wearing a face covering due to a medical condition, must wear a non-restrictive alternative (i.e face shield)





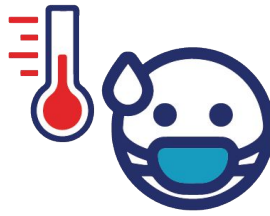
## PHYSICAL DISTANCING

Recent evidence indicates that in-person instruction can occur safely without minimum physical distancing requirements when other mitigation strategies (e.g., masking) are implemented.

- WCCUSD will comply with the current CDPH and CDC guidance that recommends 3 feet social distance wherever possible. When it is not possible to maintain a physical distance of at least 3 feet, such as when schools cannot fully reopen while maintaining these distances, it is especially important to layer multiple other prevention strategies, such as indoor masking.”







# HEALTH SCREENING

## Daily Home Health Screening

- All parents will monitor their child's health on a daily basis
- Prior to coming to school each day, parents must review the self screening questions (Self Screening Instructions)
- Parent shall notify school if student fails self screening

## Daily In Person Screening

- All staff and students will conduct a self-health screen before arriving on campus.
- Once on campus additional screening is available for staff through the QR Code process
- If staff or student(s) fail the screening process they shall return home.

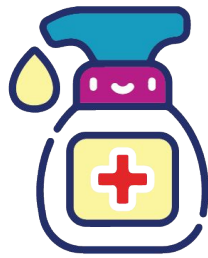




# HAND HYGIENE

- Frequent hand hygiene is one of the most important preventative practices
- Hand hygiene stations will be accessible on campus
- Students and staff will be required to wash or sanitize their hands upon arrival to school each day before entering the classroom
- Time for hand hygiene will be scheduled throughout the day including before eating
- Ensure adequate supplies to support healthy hygiene behaviors, including soap, tissues, no-touch trash cans, face coverings, and hand sanitizers with at least 60 percent ethyl alcohol for staff and children who can safely use hand sanitizer.





## CLEANING & DISINFECTING

- Outdoor areas generally require normal routine cleaning
- Targeted use of disinfectants will be done safely on outdoor hard surfaces and objects touched by multiple people
- High-touch surfaces made of plastic or metal will be cleaned routinely
- If a facility has had a sick person with COVID-19 within the last 24 hours, we will clean AND disinfect the spaces occupied by that person during that time.





## MEALS

- Breakfast and lunch will be served daily to all students. Food Services will provide each student a pre-packaged meal.
- Students may not sit across from each other while eating indoors and should adhere to current distancing recommendations
- Principals will create a schedule that allows breakfast and lunch to be served while meeting the above stated safety guidelines and meets site specific needs.
- Secondary service will be at the service windows or carts will be placed outside at sites where staffing permits to provide open-air service for students.
- Maximize physical distance as much as possible while eating (especially indoors). Using additional spaces outside of the cafeteria for mealtime seating such as the gymnasium can help facilitate distancing. Arrange for eating outdoors as much as feasible.
- Clean frequently touched surfaces. Surfaces that come in contact with food should be washed, rinsed, and sanitized before and after meals.





# TRANSPORTATION

- Public transportation, AC Transit and WestCat will have full seating capacity on its bus lines.
- All students and passengers will be required to wear masks.
- Windows will be halfway down for ventilation.







# ENTRY INTO CAMPUS

## GATES/ACCESS POINTS-ARRIVALS

- School gates will be clearly marked with the appropriate signage indicating students may enter and exit through each gate.
- As much as possible, we will use one entry point of access
- If multiple points need to be accessed, each access point will have staff present to ensure safe entrance onto campus





## ENTRY INTO CAMPUS ELEMENTARY

- Students must wear a cloth face covering or surgical mask when entering a school
- Students arriving on campus without face coverings or surgical masks will be provided an appropriate face covering or surgical mask
- Once on campus, students will walk to their assigned areas
- Students must face a single direction
- Signage with reminders to students to distance, wash their hands and wear their cloth face coverings is clearly visible.





## ENTRY INTO CAMPUS SECONDARY

- Students must wear a cloth face covering or surgical mask and are expected to enter campus in a socially distanced formation
- Students who arrive on campus without face coverings that comply will be provided an appropriate face covering
- As students arrive at class, they may enter the classroom immediately or will remain in a distanced line if the hallway space allows.





## VISITORS & VOLUNTEERS

- Schools should limit nonessential visitors, volunteers, and activities involving external groups or organizations with people who are not fully vaccinated, particularly in areas where there is moderate-to-high COVID-19 community transmission
- Schools should not limit access for direct service providers, but can ensure compliance with school visitor policies
- Schools should continue to emphasize the importance of staying home when sick. Anyone, including visitors, who have symptoms of infectious illness
- Parents should not drop off items that students have forgotten during the school day, such as books, food, or devices forgotten at home
- Sites may implement an appointment process for items that are absolutely necessary.



# PROCEDURES FOR STUDENTS AND STAFF WHO HAVE OR MAY HAVE COVID-19

**ISOLATION:** separates those infected with a contagious disease from people who are not infected.

**QUARANTINE:** restricts the movement of persons who were exposed to a contagious disease in case they become infected.

- Information regarding individuals with COVID-19 symptoms, close contacts, or COVID-19 positive individuals is sensitive, confidential information
- Information shared by families and staff is provided to a minimal number of people
- Whenever possible no names are used while the safety of the school's students and staff is addressed. Names are not released to the public
- Isolate potentially infected student(s) in the designated waiting room/space
- Contact the appropriate supervisor or administrators for Covid protocols
- Conduct symptomatic rapid testing on staff or student
- Site Administrator shall contact the WCCUSD Covid email address for contact tracing
- Administrator will send positive test person(s) home for quarantine purposes
- Strongly recommend that unvaccinated students and staff be offered regular COVID-19 screening testing.





# WE ASKED YOU ANSWERED

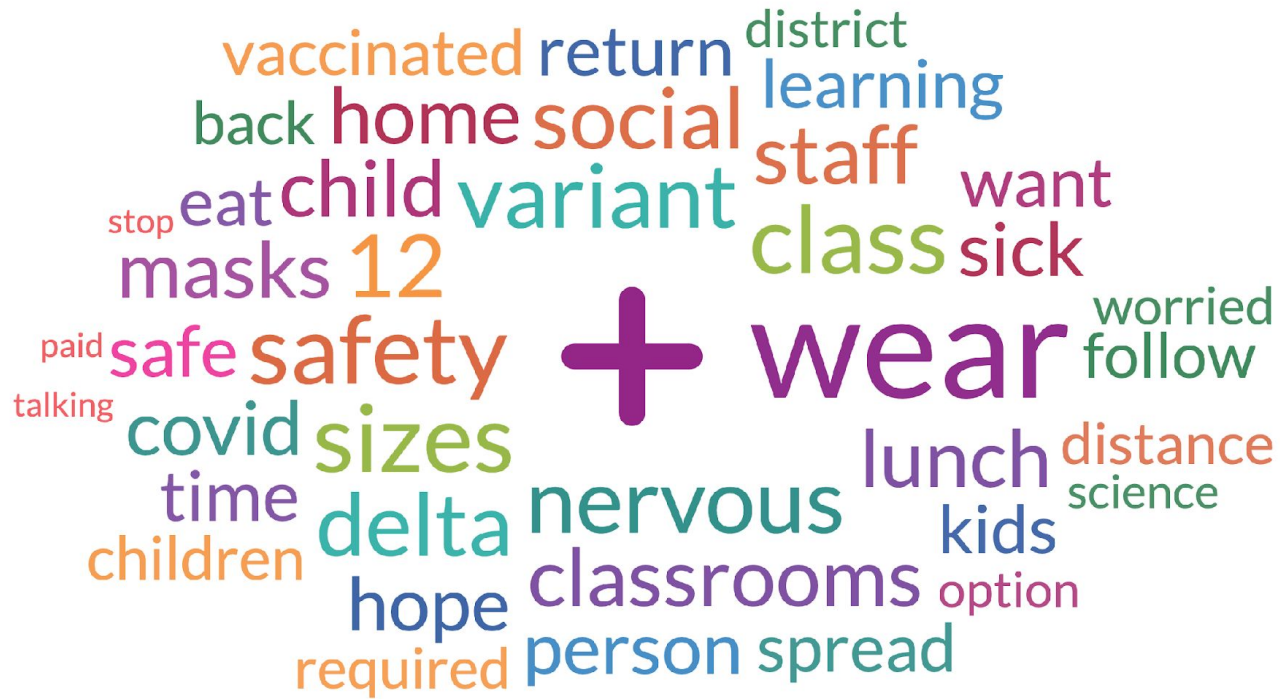
STAKEHOLDER ENGAGEMENT &  
COMMUNICATIONS



**The following information was collected from the WCCUSD stakeholders through Community Forums and Listening Sessions regarding the return to school on August 16.**









## THOUGHTS

### Key Thoughts



**I hope the kids can socialize normally.**

**4.3** ★★★★★ (26 👤)

Ranked #1 of 322

**I am hopeful my child will reconnect socially with peers and renegade with learning that is not on a screen.** It's important because my kid and so many others have become deeply screen addicted and learning can't happen without human connection.

**4.2** ★★★★★ (25 👤)

Ranked #3 of 322

**My kids will get to learn in person and play with their friends.**

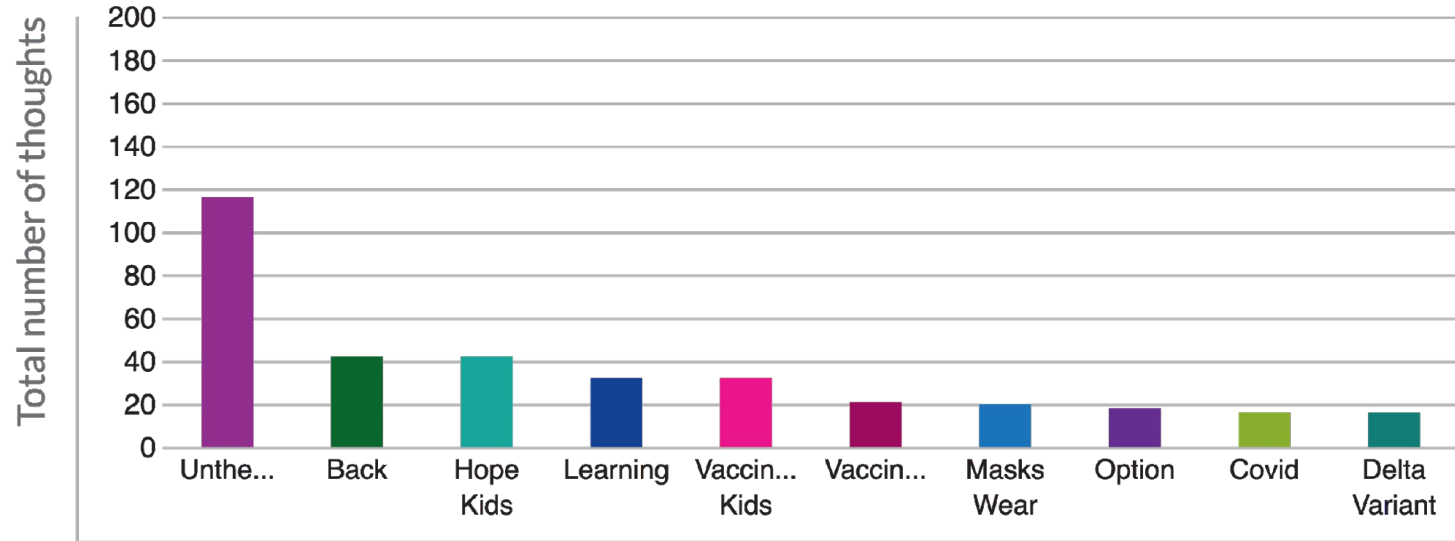
**4.2** ★★★★★ (24 👤)

Ranked #4 of 322



## AI GENERATED THEMES

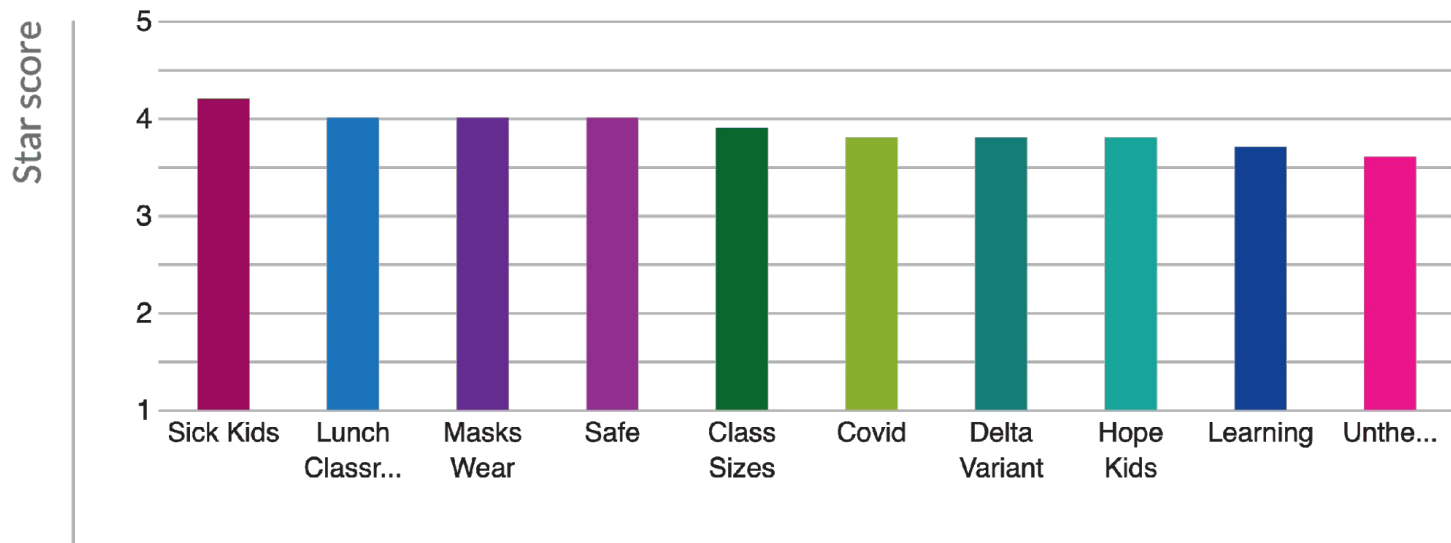
Top Themes by total thoughts





## AI GENERATED THEMES

### Top Themes by star score





## THOUGHTS

### Sick Kids



**I hope we have learned lessons in flexibility, if my child is too sick for in person, than they should be able to still follow the day at home** Keeping kids home when sick should not be a punishment in their attendance, perfect attendance awards lead to sick kids coming when they shouldn't **4.2** ★★★★★ (17 👤)

**What happens when a student is sick? Will schools have to be shut down if there is an outbreak?** **3.9** ★★★★★ (22 👤)

**Hoping that everyone follows proper protocol as to if your sick stay home.** Important to me because as a parent we don't know what others do outside the home. **3.7** ★★★★★ (5 👤)



## THOUGHTS

### Lunch Classrooms



Classrooms are tight and students and desk fill most of the portable classrooms. How will they stay safe and transmission of covid 19 be prevented? Safety and infection control 4.2 ★★★★★ (16 👤)

Eating means masks comes off and transmission can happen easily, how is lunch time going happen safely 4.2 ★★★★★ (15 👤)

Lunch? I worry that lunch at secondary schools will be everyone together at the same time. 4.0 ★★★★★ (16 👤)



## THOUGHTS

### Masks Wear



Class size is a big issue. Keeping the social distancing and masking is a relief. Kids get sick, it's what they do. Masks will always be helpful

4.1 ★★★★★ (17 👤)

Do your part Keep your mask on and the teachers and staff too

4.1 ★★★★★ (17 👤)

Continue to wear a mask and encourage kids to wash their hands.

4.1 ★★★★★ (13 👤)





# HOW CAN I LEARN MORE?

STAKEHOLDER ENGAGEMENT &  
COMMUNICATIONS

# DISTRICT RESOURCES

## Return 2 School Site

All resources and updates regarding the return to school plan can be found on the website at [www.wccusd.net/return2school](http://www.wccusd.net/return2school).

## Social Media

The district regularly posts information about events, meetings, and other notifications. Follow us on [Facebook](#), [Twitter](#), [Instagram](#), [YouTube](#) and [Linkedin](#).

## Return to School Forms

Please make sure that you complete all the required Back to School Annual Forms. You can [do that here](https://wccusd.powerschool.com) (<https://wccusd.powerschool.com>). If you need assistance [watch these videos](#).

## District Newsletter

[Sign up](#) for the community newsletter to learn more about news and events across the district.

## Update Contact Info

We need your **BEST AND CORRECT** contact information for the 2021-22 school year. Parents/Families can update the information through PowerSchool in the [Annual School Forms Process](#).



# SCHOOL RESOURCES

## Digital Backpack

Did you notice the Digital Backpack menu item at the top of your school's website? The District is working to provide a one-stop-shop of resources to support a successful return on August 16. Check the Digital Backpack regularly for new information beginning August 2.

## Update Contact Info

Please make sure that your school has your best and updated contact information. You can [do that here](#) through the Annual School Forms Process. If you need assistance [watch these videos](#).

## Bell Schedules

Your school's Bell Schedule will be available no later than August 2 on your school's website under Our School and then Bell Schedule.



# COMMUNICATION PLAN

## Websites

Bookmark your schools website and the [www.wccusd.net/return2school](http://www.wccusd.net/return2school).

## Social Media

Follow the District on its social media channels for Return to School updates.

## Email & Peachjar

Notifications about the return to school plan will also be distributed via email. Be sure to update your information in Powerschool for the 2021-22 school year.

## Principals & SCOWS

Sign up for your schools communications; join your Principals for Return to School and Back to School meetings.

## TV & Radio

Did you know the District has a radio station? Tune in to keCg 88.1 FM or 97.7 FM, and the Contra Costa County Office of Education to see and hear announcements about the return on August 16.

## Media & Partners

WCCUSD's community partners play a vital role in sharing the return to school plan. The District will distribute a press release and social kits for partners to support the in-person return.





# FEEDBACK

Your feedback is important to us. Submit your question or comment by completing the form at

<http://bit.ly/fall2021updates> or email [feedback@wccusd.net](mailto:feedback@wccusd.net)