

COVID-19 and Schools Study Session

WCCUSD's Board of
Education Presents:

**COVID-19 + Schools
Study Session**

March 4, 2021

What is guiding WCCUSD's return to in-person support?

WHO SETS THE GUIDANCE

State, California Occupational
Safety & Health Administration

State and Contra Costa County

District Implementation

Community guidance

PROCESS

COVID-19 Safety Plan (CSP)

**COVID Protection
Program (CPP)**

**COVID-19 School
Guidance Checklist**

Administration Handbook

Community Handbook

Health & Legislative Updates

“Whole Child, Whole Community”



CCC Health Current Conditions

Contra Costa County COVID-19 as March 3

- Purple Tier
- 10.7 (9.1 adjusted) cases per 100,000
- Test Positivity Rate 3.2%
- Equity Metric 5.3%

Schools can reopen in Purple and Red Tiers if very specific requirements are fulfilled.

| County risk level | Adjusted case rate* 7-day average of daily COVID-19 cases per 100K with 7-day lag, adjusted for number of tests performed | Positivity rate** 7-day average of all COVID-19 tests performed that are positive | |
|--|--|--|---|
| | | Entire county | Healthy equity quartile |
| WIDESPREAD Many non-essential indoor business operations are closed | More than 7.0 Daily new cases (per 100k) | More than 8.0% Positive tests | |
| SUBSTANTIAL Some non-essential indoor business operations are closed | 4.0 – 7.0 Daily new cases (per 100k) | 5.0 – 8.0% Positive tests | 5.3 – 8.0% Positive tests |
| MODERATE Some indoor business operations are open with modifications | 1.0 – 3.9 Daily new cases (per 100k) | 2.0 – 4.9% Positive tests | 2.2 – 5.2% Positive tests |
| MINIMAL Most indoor business operations are open with modifications | Less than 1.0 Daily new cases (per 100k) | Less than 2.0% Positive tests | Less than 2.2% Positive tests |

AB/SB 86 Update-Spring Reopening

- Instructional Day components remain in effect and the **legislative intent** is to provide **additional support** beyond the current offerings
- By April 1, requires Districts to offer in-person instruction to prioritized student groups K-12 *“to the greatest extent possible”*
 - Based upon capacity and staffing ability due to social distancing all offerings may be daily, or other hybrid options fewer than 5 days
- In Purple Tier, Districts expand the optional in-person instruction to grades K - 2
- Once the County moves into the Red Tier, the optional in person opportunity sh expanded to all elementary grades and one grade level at the middle and high



In-Person Spring Reopening Grant - \$2B

- LEAs that only commence offering in-person instruction after April 1, 2021 will have their apportionment reduced by 1% for each day of delay. LEAs that do not offer in-person instruction by May 15, 2021 will forfeit their share of the \$2 billion in-person instruction grant.
- The District must adopt a Covid Prevention Plan (CPP)
- Projected 9 million to WCCUSD if we do not opt out. Funding based on LCFF numbers. Funds expended by 7.30.21



In-Person Spring Reopening Grant - \$2B

- “In-person instruction” is defined in SB/ AB 86 as “instruction under the immediate physical supervision and control of a certificated employee of the LEA while engaged in educational activities required of the pupil.”

Testing-For LEAs in **Purple tier counties**, LEAs must conduct asymptomatic testing for staff and students participating in in-person instruction consistent with any of the CDPH testing cadences as detailed in the CDPH. *However, an LEA will not be required to follow CDPH testing guidelines if it provides in-person instruction on or before March 31, 2021, or if its governing board adopts a plan to provide in-person instruction and has publicly posted its COVID-19 Safety Plan on or before March 31, 2021.*

- LEAs in counties that move out of the Purple tier (i.e. into the Red tier or lower) are also not required to maintain asymptomatic testing for staff and students consistent with the CDPH testing cadences.



Expanded Learning Opportunities Grant \$4.6B

- Grants may be used to accelerate learning and address student needs, such as extended learning time, professional development, address social-emotional learning, and access to school meals.
- Estimated 20 million to WCCUSD
- Activity period is summer break 2021 through August 31, 2022.
- At a minimum, support must be offered to students who are low income, English learners, foster youth, homeless, at risk of abuse, disengaged, below grade level, and students with disabilities.



Elementary and Secondary School Emergency Relief (ESSER) - Federal

\$24 million in one-time grants for WCCUSD. These funds will support many of the supports that were in place one-time this school year. May be used for various strategies to accelerate learning and address student needs such as:

- Extended learning time
- Professional Development
- Programs to address social-emotional learning
- Access to school meals
- Site Supports
- Technology
- Facilities
- Safety and COVID-19 Prevention

No reopening plans required



Important Dates

For In-Person Grant:

- Posting of CSP/CPP by March 31 with Plan for In-Person Instruction finalized

For Expanded Learning Opportunities Grant and ESSR

LEA Boards must also adopt at a public meeting an expenditure plan for these funds prior to June 1, 2021, but may expend the funds prior to this time. SB/ AB 86 requires ... an explanation of how LEAs will coordinate these funds with federal Elementary and Secondary School Emergency Relief (ESSER) funds.

Vaccinations

The district has received codes through the County Office of Education for vaccine appointments through the Myturn site. These codes are prioritized for frontline workers and those working with students. Nutrition Service workers are first on the list and have started to receive codes as of today. This process is coordinated through the office of the Superintendent

We are continuing to share as much information as possible with staff

We have had two mobile clinics at Richmond High School and are looking to make that a permanent site. This site has prioritized those 65+.



Centers For Disease Control/CDPH Guidelines

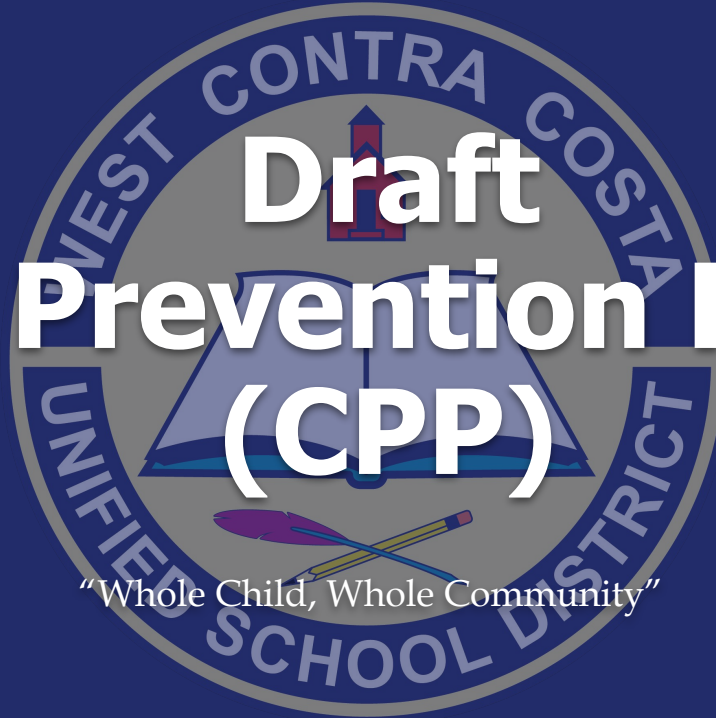
CDC Recommends Schools Reopen with Strong Mitigation Strategies

- Mitigation Strategies Include:
 - Wearing face coverings/ Physical Distancing
 - Handwashing , cleaning facilities and rooms
 - Contact tracing with isolation/quarantine in collaboration with health department
- CDC doesn't currently recommend schools symptom screen for students
 - Recommend screening at home before school
 - Students who are sick should not attend school in-person.
- CDPH Requires:
 - COVID-19 Prevention Program (CPP) complete and posted before opening
 - AND that all public and private schools must report to the local health officer information about any staff or students tested positive for COVID-19.



Draft COVID Prevention Program (CPP)

"Whole Child, Whole Community"



WCCUSD Draft COVID Protection Plan (CPP)

The COVID Protection Plan (CPP) provides guidance for actions and community communication that will take place when COVID-19 is suspected at a school or District facility.

In an effort to prepare the district for COVID-19 related situations due to transmission within the WCCUSD community, this guidance was created to assist supervisors in providing and obtaining key information to determine the appropriate response.

The Districts COVID Response team will address all reported situations promptly during work hours after receiving notification at covid@wccusd.net



WCCUSD Draft COVID Protection Plan (CPP)

Proactive Measures and Appropriate Responses for Illness and COVID-19 Cases

- An education campaign to encourage students and families to stay home when ill and to practice appropriate hygiene and “etiquette”
- Screening for fever and symptoms
- Isolation Space for COVID-19 symptoms
- Plan for the potential of school closure(s)
- Communication Plan
- Options for staff members who are at-risk of health complications



(CPP) Face Coverings

- Face coverings must be used in accordance with CDPH guidelines unless a person is exempt as explained in the guidelines.
- Information contained in the CDPH Guidance for the Use of Face Coverings should be provided to staff and families of students. The face covering guidance applies to all settings, including schools.
- Training should also include policies on how people who are exempted from wearing a face covering will be addressed.



(CPP) Parent and Student Waivers Forms

WEST CONTRA COSTA UNIFIED SCHOOL DISTRICT HOLD HARMLESS, RELEASE AND WAIVER OF LIABILITY

AGREEMENT RELATED TO COVID-19 FOR EXTRACURRICULAR ACTIVITIES

- All student athletes must have a Signed waiver by the student and guardian on file before competition begins.
- Acknowledges and accepts full responsibility for familization of CDC Guidelines
- No one home has been diagnosed with or have Symptoms of COVID-19
- Proper Notification if any student or household member is experiencing symptoms or has been diagnosed
- There is a risk of being exposed to COVID-19 while participating, WCCUSD can not eliminate the risk



Athletics Offered This Spring

- **Season 1 (Feb 26 - April 17)**
 - Football (March 1st - April 12)
 - 5 games beginning March 11th
 - Cross Country (March 6th - April 8)
 - Girls Tennis (Feb. 23rd - April 8)
 - Girls Golf (March 4th - April 8)
 - Softball (March 8th - April 8)
 - *Water Polo (March 8th - May 3rd) * *Pending Availability*
 - **Volleyball (March 8th - April 8) ** *Yellow Tier/Indoor*



Athletics Offered This Spring

- **Season 2 (April 12 - June 7)**

- Boys Golf (April 12th - May 31st)
- Boys Tennis (April 12th - May 31st)
- Baseball (April 12th - May 31st)
- Soccer (April 12th - May 31st)
- Track (April 12th - May 31st)
- Swim (April 12th - May 31st) * *Pending Availability*
 - **Basketball (April 12th - May 31st) ** *Yellow Tier/Indoor*
 - **Wrestling (April 12th - May 31st) ** *Yellow Tier/Indoor*





Draft WCCUSD Reopening Safety Operations Handbook for Administrators

"Whole Child, Whole Community"

Purpose

The purpose of the *WCCUSD Reopening Safety Operations Handbook* is to provide a guide for school site administrators on safety logistics on school campuses.

The handbook is aligned to the *COVID Prevention Program (CPP)*.

The following slides contain excerpts from the handbook which is being finalized because our schools will be open for in-person instruction in the fall



Entry to Campus



School gates will be clearly marked with the appropriate signage indicating students may enter and exit through each gate. As much as possible, we will use one entry point of access. If multiple points need to be accessed, each access point will have staff present to ensure safe entrance on to campus.

Designated cohorts of students and staff should enter and exit through the same gate each day. Arrival and Departure times should be staggered as much as possible to avoid mass congregation.

Exit from Campus



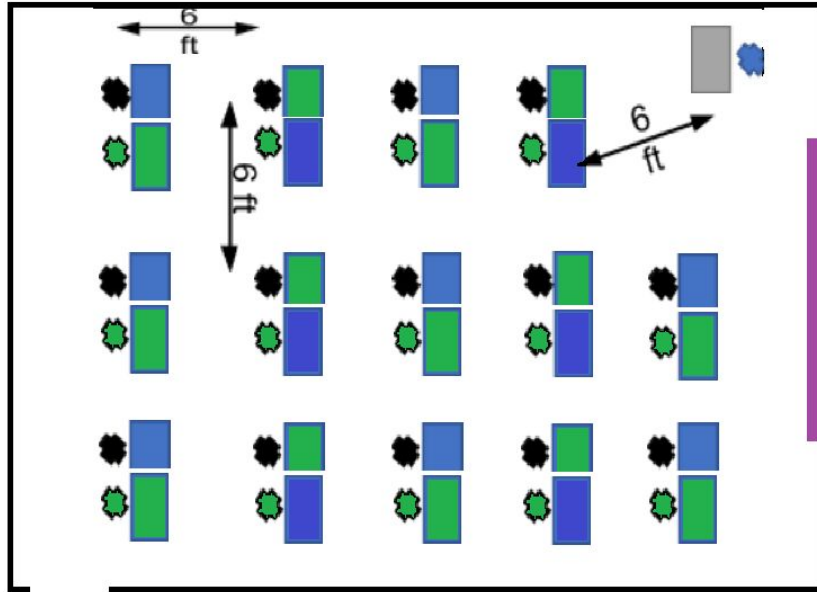
All efforts will be made to ensure appropriate distancing. Designated cohorts of students and staff shall enter and exit through the same gate each day. Families with older students shall be encouraged to support their siblings walking home or walking a short distance from campus to a pre-arranged pick up spot in order to decrease the number of individuals remaining/waiting on campus at dismissal. Students awaiting bus pick-up shall stand on distance ground marks in a line. Sites may design their own dismissal systems that work for their unique sites.

School Day Logistics



School sites shall create plans for directional flow of students as they move around the campus between breaks. Hallways in which six feet of distancing is not possible shall be made into one-way hallways so that students are not facing each other as they pass one another. Classrooms that exit into common hallways shall minimize the number of students in the hallway at one time.

Classroom Use



Typical Seating Configuration
Maintain 6' spacing
between students

There will be approximately 6 feet of distancing between the teacher's desk, teaching space, and students. When practicable, all students will be seated in rows. Students will sit in assigned seats and will all be facing forward. Classrooms may continue to house all of the student desks and chairs; however, only half will be used by the students in attendance, leaving empty desks between students. Desks will be marked to identify which desks should be used.

Ventilation



All HVAC system filtration shall be upgraded to MERV 13 rated filters to meet CDPH guidance. Upgraded MERV 13 filters will be replaced at least twice during the school year.

Per CDPH guidance, ventilation is critical as ventilation introduces fresh outside air, filters recycled inside air and can aid in diluting the viral load in the occupied space. Note, ventilation is different from comfort cooling, ventilation or fan mode must remain on during all occupied periods. To aid in ventilation, doors and windows may be opened as long as outside conditions allow. **Where mechanical ventilation is not available, HEPA filtration devices have been installed.** It is recommended that whenever possible windows and doors should be opened to increase ventilation.

Student Personal Items: Backpacks & Devices

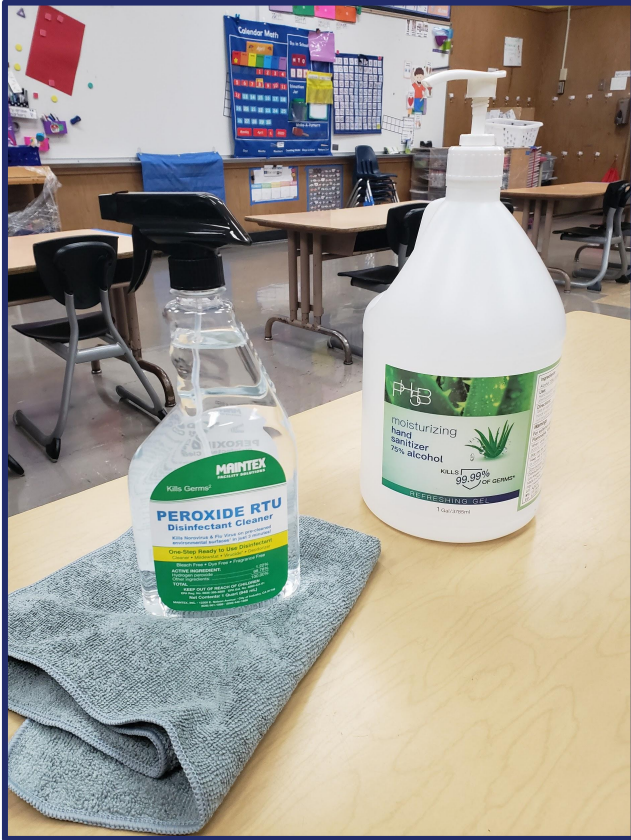
Devices

Students have been assigned their own Chromebook to minimize sharing. Students should come to school with a fully charged device and bring their charging cable to school to ensure devices maintain a charge during the entire school day. Sites can utilize the Chromebook carts on campus for charging devices in the classroom and in common areas on campus such as the Library.

Supplies

All effort needs to be made to reduce the sharing of student materials. Sites shall provide students with supplies and/or permit families to provide certain supplies as is consistent with your regular messaging about student materials (pencils, paper, pens, crayons, etc.). If schools/teachers choose to create a system for providing supplies for students in class (or extended learning), all efforts should be made to ensure those supplies are only used by the student assigned to them.

Cleaning & Sanitation



- Custodians will address frequently touched surfaces at least once daily per CDPH guidelines
- In addition to the cleaning performed by the custodial staff, disinfectant and microfiber cloth towels will be provided in each classroom for teachers to be able to utilize for incidental cleaning as desired. Used micro cloth towels will be collected by the custodians and replaced with clean ones on a regular basis. Disinfectants will be stored in a secured cabinet when not in use.
- Disinfectants will be kept in stock in the warehouse; the principal or designee works with their site custodian to order more when necessary

PPE - \$1.3 million purchased



PPE Inventory

| Item | Description | Inventory | *County | **Pending |
|--------|---|------------|---------|------------|
| 825200 | HAND SANITIZER DISPENSER WITH STAND | 75.00 | | 600.00 |
| 825210 | DISPENSER MANUAL RUBBERMAID SS 10/CS | 1,640.00 | | 2,200.00 |
| 974396 | GLOVES, NITRILE, MEDIUM SSS84150M | 1,106.00 | 116 | |
| 974397 | GLOVES, NITRILE, LARGE SSS84150L | 223.00 | | 1,000.00 |
| 997403 | TISSUES WIPING FACIAL, 100/BX, WHITE, 2 PLY | 1,839.00 | | |
| 998215 | HAND SANITIZER LIQ. 6319-32SB, 32OZ SPRAY BOTTLE, 6/CASE | 486.00 | | |
| 998216 | HAND SANITIZER REFILL BAGS, 4/CS RCP2080803 RUBBERMAID SAN MF 1000 TC | 3,000.00 | | |
| 998220 | HAND SANITIZER, 6319-4G, 1 GAL BOTTLES, NO PUMP, 4/CASE | 632.00 | 636 | |
| 998225 | HAND SANITIZER, 86319-70-8OZ MED MATE, 8OZ BOTTLE, 12/CASE | 4,344.00 | | |
| 998226 | MASK, N95 | 5,100.00 | | 20,000.00 |
| 998227 | MASK, CLOTH, STAFF | 13,500.00 | 6,614 | 65,000.00 |
| 998228 | MASK, 3-PLY DISPOSABLE, GRADE 7 - 12 | 100,000.00 | 33,433 | |
| 998229 | MASK, 3-PLY DISPOSABLE, CHILD SIZE, GRADE 4 - 6 | 125,000.00 | | |
| 998230 | HAND SANITIZER, 6319-4G, 1 GAL BOTTLES, WITH PUMP, 4/CASE | 2,758.00 | | |
| 998231 | MASK, 3-PLY DISPOSABLE, CHILD, K-3 | 3,450.00 | | |
| 998232 | MASK, CLOTH, SIZE M/L, GRADE 7 - 12 | 15,950.00 | 28,418 | 200,000.00 |
| 998233 | MASK, 3-PLY DISPOSABLE, STAFF | 35,000.00 | 72,754 | |
| 998234 | MASK, KN95 FACE MASK | 6,668.00 | | |
| 998235 | MASK, SMILE COMMUNICATOR MASK, ADULT, ASSORTED COLORS, SP. ED. DEPT. ONLY | 6,160.00 | | 10,000.00 |
| 998236 | FACESHIELD VISOR, PETG VISOR MATERIAL | 2,482.00 | 13,228 | 50,000.00 |
| 998237 | CLEAR FACE MASK, COMMUNICATOR MASK | 989.00 | | 5,000.00 |
| 998238 | MASK, CLOTH, KID SIZE, GRADE K - 3 | 68,997.00 | | 5,000.00 |
| 998239 | MASK, CLOTH, SIZE S/M, GRADE 4 - 6 | 900.00 | | 15,000.00 |
| 998240 | HAND SANITIZER, 16OZ. 12/PK, 56JH96 | 52,733.00 | | |
| 998245 | HAND SANITIZER, 18OZ. SYMMETRY ALCOHOL FOAM PUMP W/ALOE, 12/CASE | 389.00 | | |
| 998300 | SCRATCH-RESISTANT DIRECT IMPACT RESISTANT GOGGLES, CLEAR LENS | 175.00 | | 250.00 |
| 998432 | DISINFECTANT WIPES | 15,189.00 | | |
| 998434 | LPISANWIPE, PREMIER ANTISEPTIC HAND WIPES, 200 WIPES/BUCKET | 196.00 | | |
| 998440 | STORAGE BAGS, ZIPPER, 1.75 MIL, 15" X 13", CLEAR, 2 GALLON, PK/100 | 6,764.00 | | |
| 999510 | THERMOMETER, NON-CONTACT INFRARED THERMOMETER W/ LCD DISPLAY | 248.00 | | 200.00 |
| 999512 | AA BATTERIES 4/PK | 98.00 | | 800.00 |

*County Inventory will be received by Tuesday March 9, 2021

** Orders pending with vendors



Reusable Masks for Students

Masks (2 per student per 30 days of instruction)

| | Enrollment | 30 Day Supply | 60 Day Supply | 90 Day Supply | 120 Day Supply | 150 Day Supply | 180 Day Supply |
|--------------------|------------|---------------|---------------|---------------|----------------|----------------|----------------|
| GRADES TK-3 | 8,784 | 17,568 | 35,136 | 52,704 | 70,272 | 87,840 | 105,408 |
| Grades 4-6 | 6,131 | 12,262 | 24,524 | 36,786 | 49,048 | 61,310 | 73,572 |
| Grades 7-12 | 13,422 | 26,844 | 53,688 | 80,532 | 107,376 | 134,220 | 161,064 |
| | 28,337 | | | | | | |

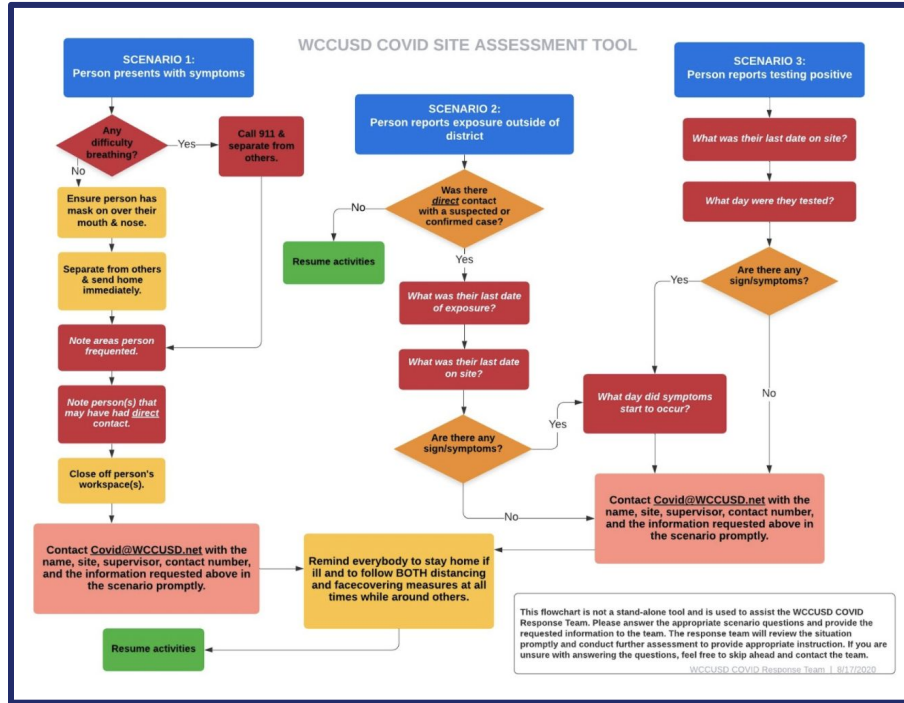
The warehouse will maintain a 90 day supply of masks and other related PPE.

District will provide an allotment of Masks and other related PPE supplies to all schools before April 1, 2021



COVID procedures for staff & students

STAFF



STUDENT

If a student is a **close contact** (within 6 feet or less for a cumulative period of 15 minutes or more, within 24 hours) of a person who has been confirmed as COVID-19 positive, the student needs to go to the Isolation Area until transportation home can be arranged. Notify the COVID Reporting Team at COVID@wccusd.net. A member of the District COVID-19 Team will contact the student's family and gather information. This information is used to determine the next steps. Per the CDPH, all close contacts need to be quarantined.

The logo of the West Contra Costa Unified School District is a circular seal. It features a red schoolhouse with a steeple at the top, an open book in the center, and a quill pen and a pencil crossed at the bottom. The words "WEST CONTRA COSTA" are written in a semi-circle at the top, and "UNIFIED SCHOOL DISTRICT" is written in a semi-circle at the bottom.

Study Session Recap

"Whole Child, Whole Community"

Dates and Recap

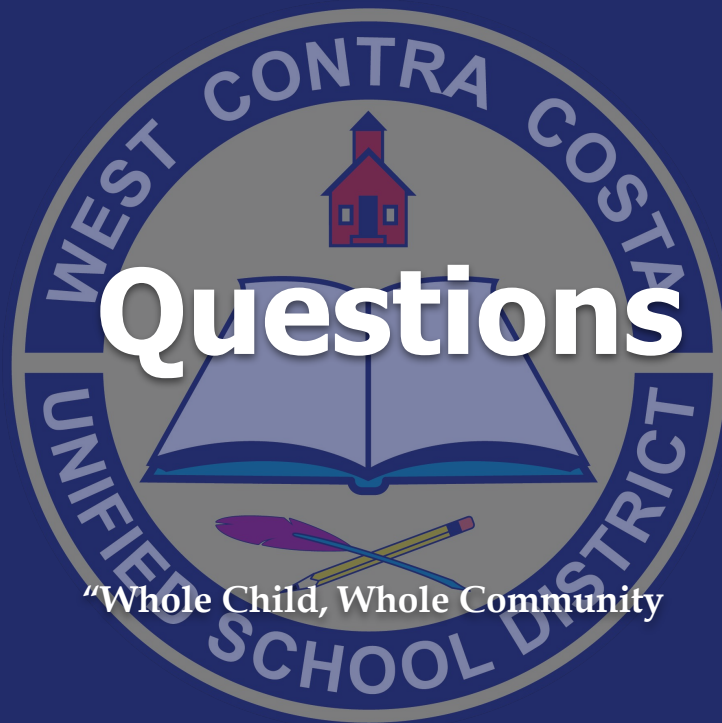
- Summer 2020 - Hub Model of School Return presented by staff. Direction given to staff to hold and not pursue any return options at that time.
- November 4 - Staff shares current state and MOU reopening criteria for all staff and students. No direction given to staff by Board.
- December 16 - Forensic Facility Review to prepare buildings and classrooms
- December 16 - Staff brings more hub options to support students. Direction given to staff to hold and not pursue more in-person student hubs until a series of study sessions are held.
- December 22nd - Special Meeting. Vaccine Resolution



Dates-Recap

- Study Session 1 - January 20th - Study Session-County Health, UCSF Doctors
- Study Session 2 - February 3rd - Study Session-Schools and the Path to Zero-Harvard Group, School Return Survey
- February 10 - Regular Meeting: Vaccination Update, Food Service Update
- Study Session 3 - February 22nd - Study Session- Schools that have reopened: St. Joes, Salesian, Marin City, El Cerrito Parks and Recreation
- February 24th - Regular Board Meeting: Staff Summer Plan presentation
- Study Session 4 - February 26th - Study and Listening Session: Staff, Unions, Community Groups, Open Community Public Comment
- Study Session 5 - March 4th, Today - Board Discussion





"Whole Child, Whole Community"