
District Middle School & Charter Data

— All Data in Context 2016-17 —

Rationale

Charter Schools pull students from throughout the District, so comparing data to neighboring schools is misleading. Data in the context of all same-level schools offers the most reasonable context to understand student-level influences to attainment and school performance.

Data on Foster, Homeless, Special Education, Socio-Economically Disadvantaged, Ethnicities served, English Language Learners (ELL), and ELL levels are provided for all District and Charter Middle Schools. Suspension data are also provided.

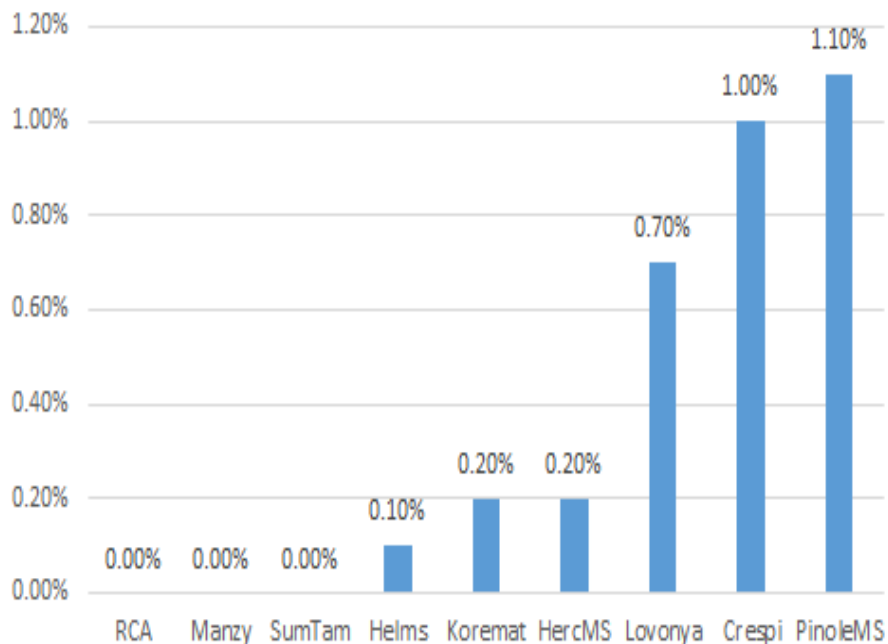
Schools included are: Crespi, DeJean, Helms, Hercules MS, Korematsu, Manzanita, Pinole MS, Richmond Charter Academy & Summit Tamalpais.

All data were collected from DataQuest, California Department of Education.

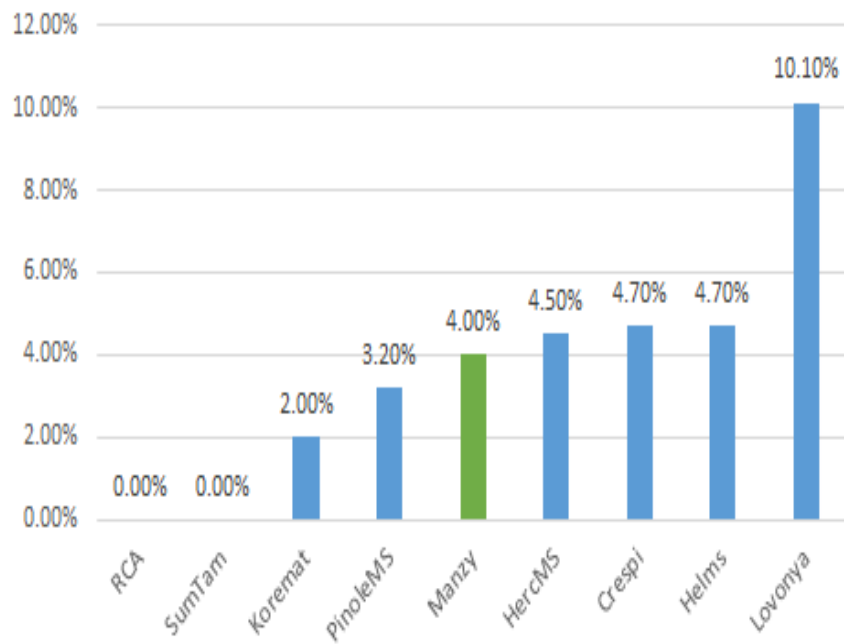
Special Populations

Foster and Homeless Youth

Foster Youth, 2016-17

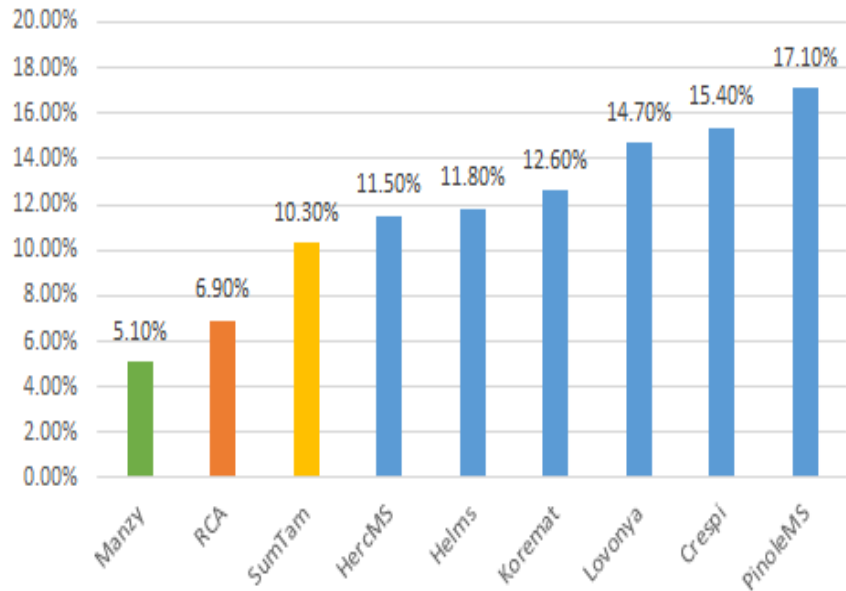


Homeless Youth, 2016-17

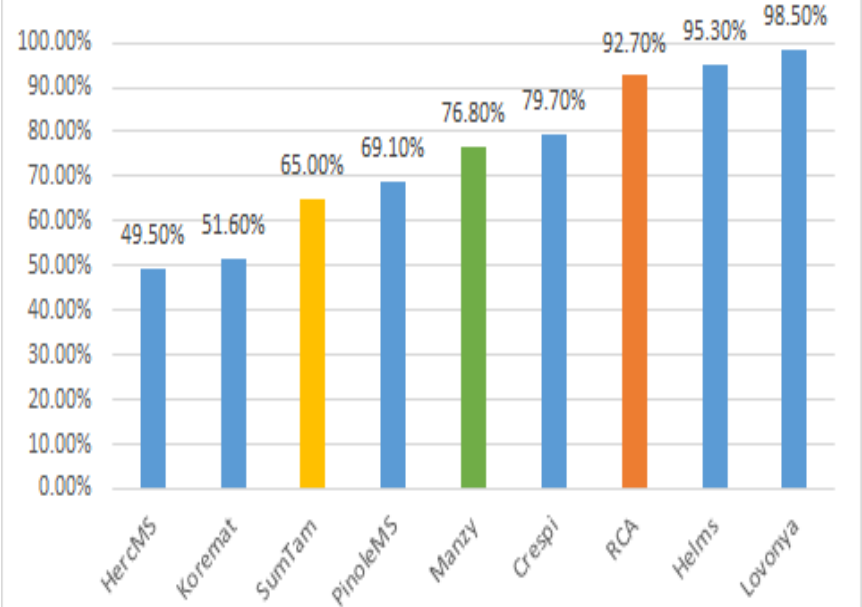


Special Education and Socio-Economically Disadvantaged

Special Education, 2016-17

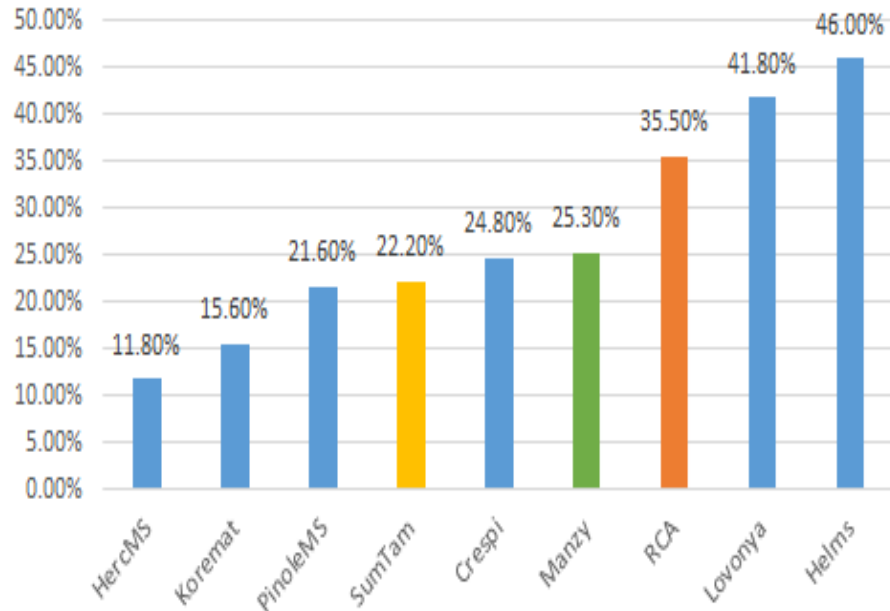


Socio-Economically Disadvantaged, 2016-17

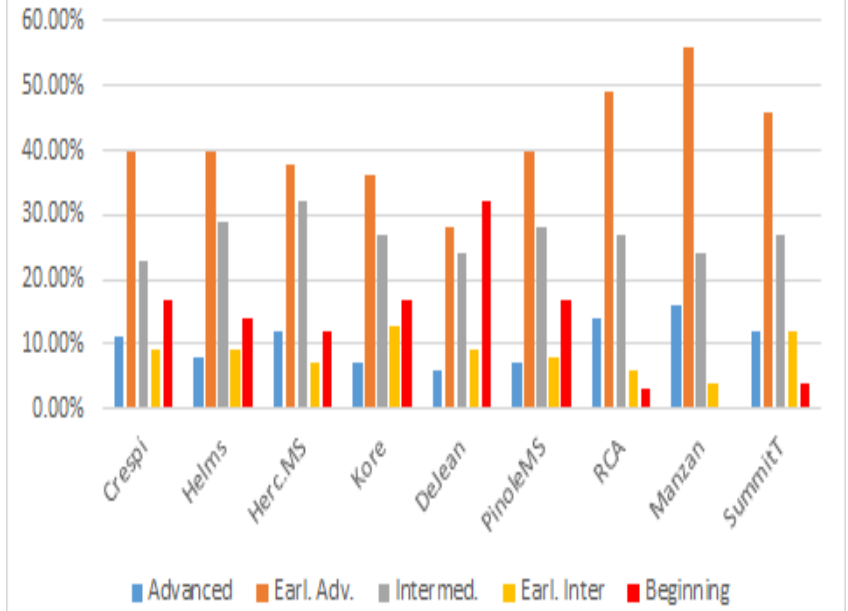


English Language Learner Percentages and Levels

English Language Learners, 2016-17



English Learner Levels

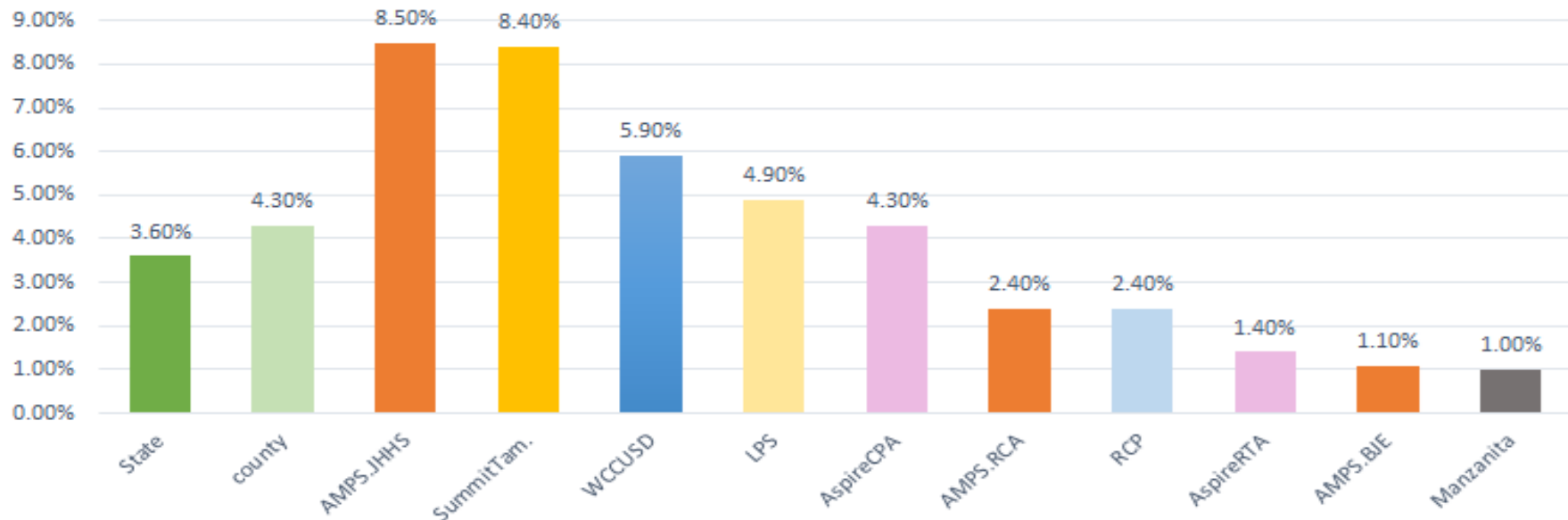


Ethnicity

Ethnicity	Summit Tam	Crespi	Korematsu	Helms	Hercules MS	DeJean	Manzanita	Pinole MS	RCA
African American	16.20%	22.60%	18.50%	9.30%	21.40%	21.70%	6.10%	18.80%	1.60%
Amer.Ind/Alask	0.90%	0.20%	0.00%	0.00%	0.20%	0.00%	0.00%	0.60%	0.00%
Asian	10.30%	15.00%	18.50%	4.40%	23.30%	5.70%	2.00%	9.70%	4.40%
Filipino	4.30%	5.70%	1.90%	1.90%	22.30%	0.70%	2.00%	9.50%	0.00%
Hispanic /Latino	52.10%	43.50%	28.80%	82.20%	22.80%	67.60%	83.80%	43.50%	93.10%
Pacific Islander	0.00%	1.00%	0.80%	0.20%	0.50%	0.40%	0.00%	0.70%	0.00%
White	5.10%	9.40%	29.90%	1.40%	5.30%	1.50%	5.10%	14.70%	0.80%
Two or More Races	9.40%	1.40%	1.70%	0.30%	3.90%	1.30%	1.00%	1.30%	0.00%
Not Reported	1.70%	1.40%	0.00%	0.20%	0.30%	1.10%	0.00%	1.30%	0.00%

Suspension Rates

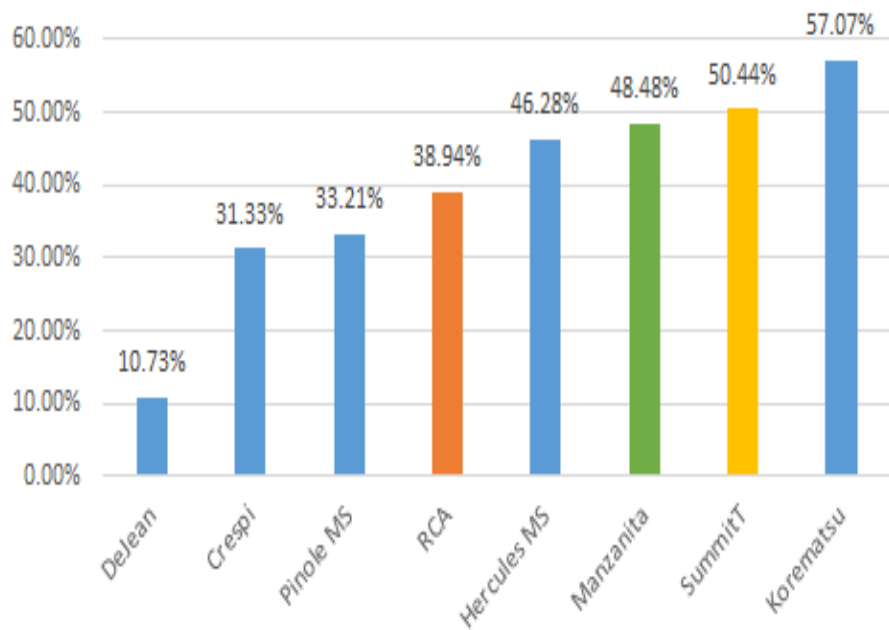
Suspension Rate, 2016-17



SBAC Performance Data, 2016-17

SBAC, All Students, ELA & Math

SBAC.2016-17, ELA



SBAC.MATH. 2016-17

